



# Search for Provost

**C>ONSTRUCTOR**  
UNIVERSITY



## About Constructor University

Constructor University was founded in 1999 as the International University of Bremen, with the support of the University of Bremen, Rice University in Houston, Texas, and the Free Hanseatic City of Bremen, from whom it gained preliminary state recognition.

In the fall of 2001, 130 students from 40 countries arrived on campus and started their studies together with 27 professors. Speaking at its official opening, former chancellor of Germany, Helmut Schmidt, expressed the prevailing and sustaining vision of the university:

“Germany urgently needs universities such as the one being inaugurated in Bremen today: that is, institutions of higher learning that are modern, performance-oriented, independent of the reins of state bureaucracies, interdisciplinary, and, at the same time, international.”



Twenty-five years later, having enjoyed incarnations first as IU-B and next as Jacobs University, Constructor University now enjoys a reputation as a top-ranked, English-language, private fully accredited university, at the forefront of academic innovation, recognized for its world class education, innovative pedagogy and cutting-edge research. A genuine global institution with students, faculty and staff representing over 120 nations. Constructor University is located on a lush, American-style campus in the scenic and historically significant city of Bremen, Germany.

Constructor University employs advanced digital learning tools to equip our students with fundamental knowledge, critical thinking and practical skills to build their professional careers and to address the world's most pressing challenges. Our uniquely diverse student body enjoy an active campus life, highlighted by four residential colleges, access to clubs, professional networks and academic counselling, all of which contribute to their personal and academic growth.

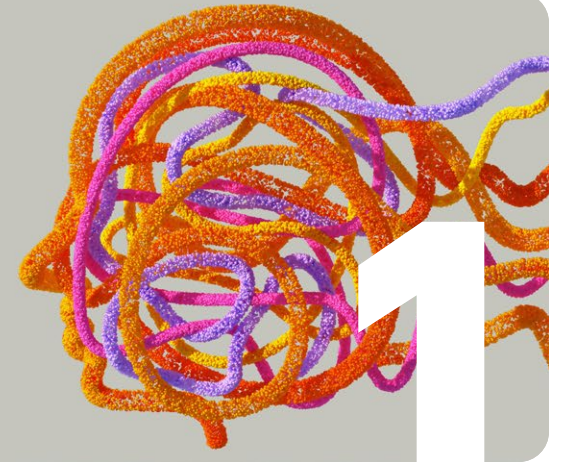
Our faculty are focused not only on teaching, but also on advancing research agenda befitting the modern research university. Faculty research has been funded by the German Research Foundation, The European Union's Framework Program for Research and Innovation, as well as leading companies across the globe.

Our commitment to regional and global economic development as well as our mission to work for the common good and to meet the greatest challenges the human community faces has led to our forming partnerships with the Constructor Institute in Schaffhausen, Switzerland leading universities worldwide and industry collaborators such as Anisoprint, JetBrains and ChemDiv, among other company partners.

## Constructor University Vision for the Future

In 2023 university leadership launched a project to identify a set of goals that would define its ambitions for the future. The vision is characterized by three fundamental goals to be achieved by 2030. These are:

To expand our on-campus technology-enriched interdisciplinary programs for a multicultural group of students and to establish a sustainable online campus designed to serve students who are drawn to our programs but who cannot attend in person.



To significantly enhance our global research presence through strategic investments and collaborations in key areas.

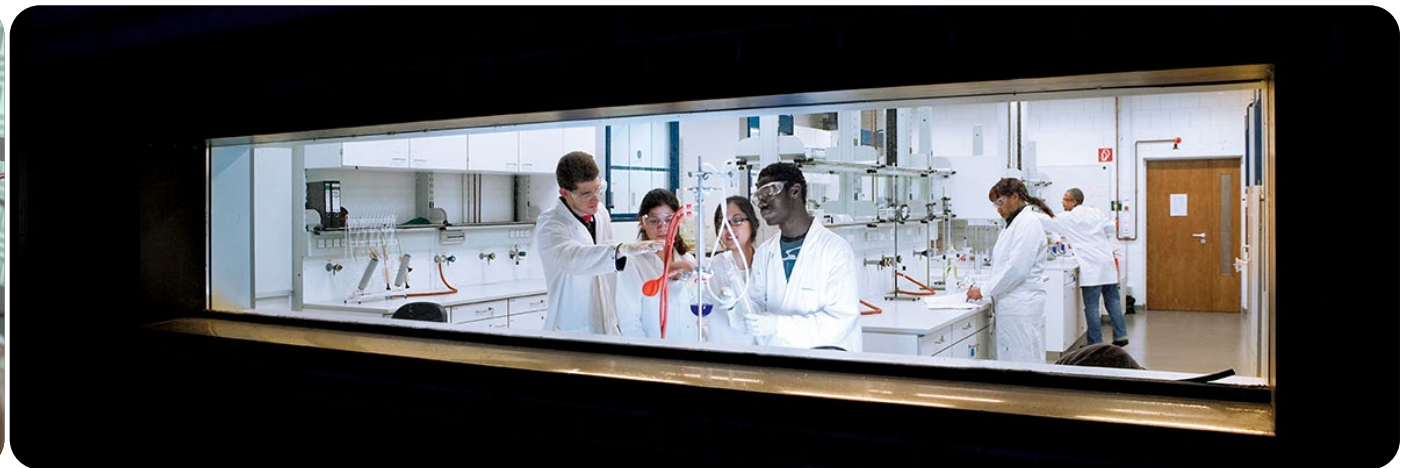
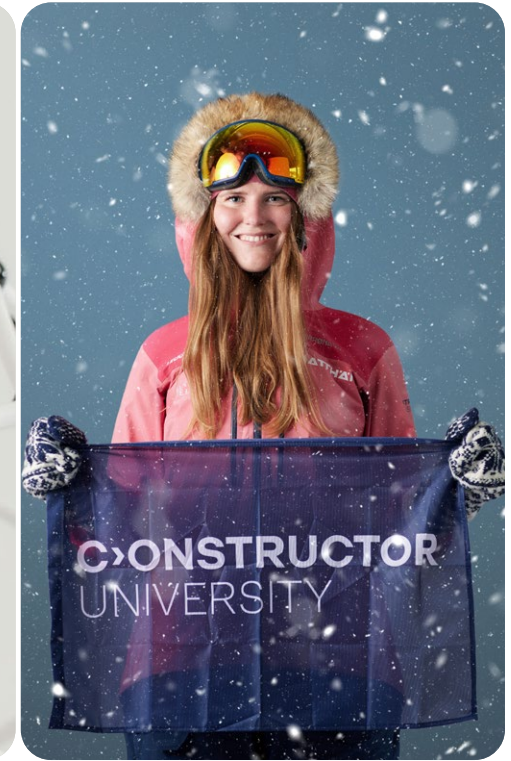
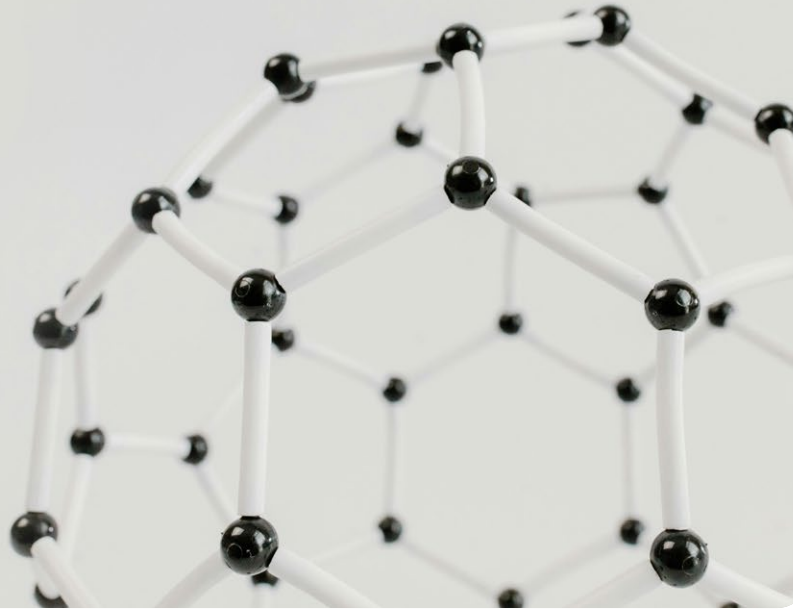


To establish a solid financial base to support and expedite our growth, ensuring the sustained excellence of our institution.



## Program Portfolio

Constructor University offers a diverse and interdisciplinary range of programs across its three schools, designed to address the pressing challenges of the world. Each school emphasizes cutting-edge research and education, providing students with a strong foundation and practical skills. Each school offers specialized programs that reflect Constructor University's commitment to innovative, high-impact education.



## The School of Science

The School of Science, led by **Dean Susanne Illenberger**, Distinguished Lecturer of Biochemistry and Cell Biology, provides an international and multidisciplinary environment for researchers in the natural sciences and mathematics. From numbers and quanta, molecules, and cells, to oceans and planets - cutting edge research in mathematics, physics and chemistry, the life- and geosciences advances our knowledge, addresses global problems, and creates new technology. The school hosts 30 research groups contributing to diverse scientific fields.

### Study programs:

- [Biochemistry and Cell Biology \(BSc\)](#)
- [Chemistry and Biotechnology \(BSc\)](#)
- [Earth Sciences and Sustainable Management of Environmental Resources \(BSc\)](#)
- [Mathematics, Modeling and Data Analytics \(BSc\)](#)
- [Medicinal Chemistry and Chemical Biology \(BSc\)](#)
- [Physics and Data Science \(BSc\)](#)



## The School of Computer Science and Engineering

Under the leadership of **Dean Alexander Omelchenko**, Professor of Applied Mathematics, Data Science, and Computing, the School of Computer Science and Engineering (CSE) engages in education and research in the Foundations of Digital Transformation. Digitalization is affecting business and economies as well as academic work and disciplines in profound ways, offering both challenges and opportunities. Transformational Technologies linked to digitalization include e.g., Artificial Intelligence and Machine Learning, Robotics and Automation, Big Data Management and Analytics, Computer Security, Electronics and Communications Technologies. The school hosts 8 research groups advancing key areas of digital and computational research.

### Study programs:

- [Applied Computer Science \(BSc\)](#) Online Program
- [Computer Science \(BSc\)](#)
- [Electrical and Computer Engineering \(BSc\)](#)
- [Robotics and Intelligent Systems \(BSc\)](#)
- [Software, Data and Technology \(BSc\)](#)
- [Advanced Software Technology\(MSc\)](#)
- [Computer Science and Software Engineering \(MSc\)](#)
- [Data Engineering \(MSc\)](#)
- [Data Engineering Technologies \(MSc\)](#) Online Program



## School of Business, Social & Decision Sciences

Led by Interim **Dean Prof. Dr. Adalbert Wilhelm**, Professor of Statistics, the School of Business, Social and Decision Sciences at Constructor University conducts research spanning the entire spectrum of human behavior, encompassing psychology, social sciences, humanities, business, logistics, and economics. The school hosts 26 research groups working on various aspects of social, behavioral, and decision sciences.

### Study programs:

- [Global Economics and Management \(BA\)](#)
- [Industrial Engineering & Management \(BSc\)](#)
- [Industrial Engineering & Management \(BSc\)](#) Online Program
- [International Business Administration \(BA\)](#)
- [International Business Administration \(BA\)](#) Online Program
- [International Relations: Politics and History \(BA\)](#)
- [Integrated Social and Cognitive Psychology \(BSc\)](#)
- [Management, Decisions and Data Analytics \(BSc\)](#)
- [Data Science for Society and Business \(MSc\)](#)
- [Data Science for Society and Business \(MSc\)](#) Online Program
- [Supply Chain Management \(MSc\)](#)
- [Supply Chain Management \(MSc\)](#) Online Program





## Research

Constructor University's three Schools convene scientists across a broad range of disciplines. Our research is characterized by multi- and interdisciplinarity that is as well the heart of our educational concept. Our faculty and research staff thrives to tackle global challenges and important societal developments by using the most recent digital technologies. Our on-campus research capabilities are enhanced through our network of global collaborators in academia and industry as well as the Constructor Group environment.

As a small residential university we take pride in the early involvement of our students in state-of-the-art pure and applied research and benefit strongly from the international and intercultural perspectives our student body brings into our research teams.

Here you can find our recent

[Research Report](#)

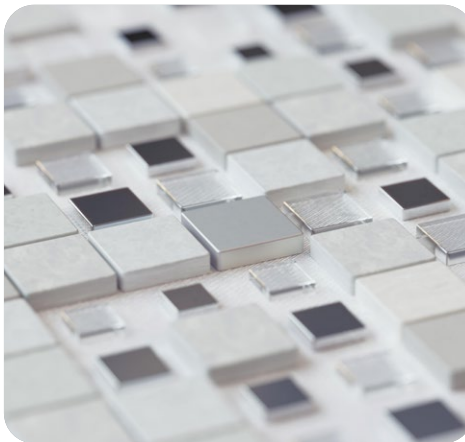


## Constructor University by the Numbers

Number of colleges	<b>4</b>
Enrollment (Fall 2024)	<b>2,026</b>
% of international students	<b>91%</b>
Countries represented in student body	<b>116</b>
Graduates (June 2023)	<b>365</b>
Student/Faculty ratio	<b>21:1</b>

### Programs of Study (2024)

Undergraduate	<b>19</b>
Graduate	<b>9</b>



### Percent of Students in General Fields of Study (as of Fall 2024)

Business Administration and Law	<b>5.8%</b>
Engineering	<b>23.8%</b>
Natural Science, Mathematics, Statistics	<b>18.3%</b>
ICT	<b>29.7%</b>
Arts and Humanities	<b>6.3%</b>
Health and Welfare	<b>0.1%</b>
Social Science	<b>6.0%</b>

### Faculty Research

Articles and books (2023)	<b>382</b>
Top 10% journal articles across all disciplines (2023)	<b>36.3</b>
% international collaborations in publications (2023)	<b>65.4</b>
Citations over past five years	<b>23,907</b>

### Ranking data

<p>The World University Rankings 2025</p> <p>Ranked 501-600 worldwide</p> <p><b>#1</b> private university in Germany</p>	<p>Humboldt 2023</p> <p>Ranks attractiveness for international researchers</p> <p><b>#12</b> out of 127 German universities</p>
<p><b>#2</b> international university in the world</p>	